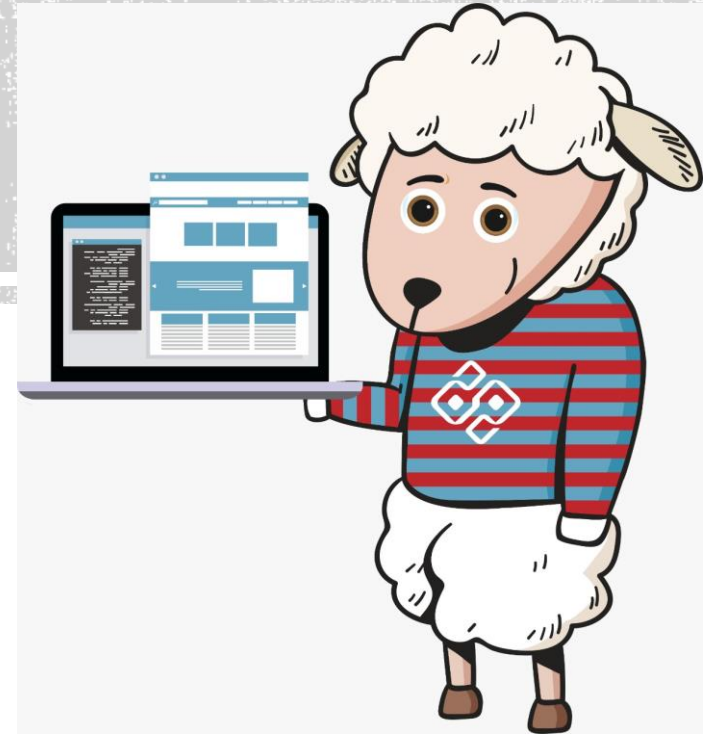


# ENARSI | Implementing Cisco Enterprise Advanced Routing and Services



El curso **CCNP ENTERPRISE - ENARSI 300-410** permite al participante adquirir conocimientos y destrezas para la implementación y resolución de problemas de tecnologías y servicios de enrutamiento avanzados incluyendo la Capa 3, servicios VPN y Seguridad de Infraestructura.

El curso, ayuda a prepararse para el examen ENARSI | Implementing Cisco Enterprise Advanced Routing and Services.

Ofrecemos: todo el material que el instructor les desee compartir durante el curso, eso incluye: las diapositivas de las clases, los videos de cada sesión en vivo y toda la documentación respecto la certificación, además de los laboratorios que realizarán durante el desarrollo del curso.

El logro en la certificación CCNP Enterprise demuestras tus habilidades en soluciones de redes empresariales.



El curso estará dirigido a aquellos profesionales con conocimientos sólidos en CCNA, CCNP y afines.

Ingenieros de redes empresariales, Ingenieros de sistemas, Administradores de red lo cual le permitirá: Obtener el conocimiento necesario para instalar, configurar, operar, y resolver problemas de una red empresarial. Calificar para roles profesionales en el enrutamiento y los servicios avanzados.

Prepararse para el examen Implementing Cisco Enterprise Advanced Routing and Services (300-410 ENARSI)





# Contenido Gral. curso | ENARSI

- IPv4/IPv6 Addressing and Routing Review
- EIGRP
- Advanced EIGRP
- Troubleshooting EIGRP for IPv4
- EIGRPv6
- OSPF
- Advanced OSPF
- Troubleshooting OSPFv2
- OSPFv3
- Troubleshooting OSPFv3
- BGP
- Advanced BGP





# Contenido Gral. curso | ENARSI

- BGP Path Selection
- Troubleshooting BGP
- Route Maps and Conditional Forwarding
- Route Redistribution
- Troubleshooting Redistribution
- VRF, MPLS, and MPLS Layer 3 VPNs
- DMVPN Tunnels
- Securing DMVPN Tunnels
- Troubleshooting ACLs and Prefix Lists
- Infrastructure Security
- Device Management and Management Tools  
Troubleshooting



# Detalle del contenido | ENARSI

No.	Chapter Title	Topic	Objective
1	IPv4/IPv6 Addressing and Routing Review		Implement DHCPv4 to operate across multiple LANs
		IPv4	Troubleshoot a DHCP configuration for IPv4 in a switched network.
		IPv6	Troubleshoot a DHCP configuration for IPv6 in a switched network.
		Packet Forwarding	Troubleshoot the packet forwarding process.
		Troubleshoot IP addressing and host configuration.	Troubleshoot common problems with IP addressing and host configurations.
		Troubleshoot static routes.	Troubleshoot common static and default route configuration issues.



# Detalle del contenido | ENARSI

2	EIGRP		Explain how advanced EIGRP features affect network performance.
		EIGRP Fundamentals	Explain how EIGRP forms neighbor relationships.
		EIGRP Configuration	Configure EIGRP manual summarization.
		EIGRP Metrics	Explain how WAN considerations affect network performance.
3	Advanced EIGRP		Explain how advanced EIGRP features affect network performance.
		EIGRP Failure Detection	Explain how EIGRP forms neighbor relationships.
		EIGRP Route Summarization	Configure EIGRP manual summarization.
		WAN Considerations	Explain how WAN considerations affect network performance.
		Route Manipulation	Explain how route manipulation affects network performance.
4	Troubleshooting EIGRP for IPv4		Troubleshooting EIGRP for IPv4



# Detalle del contenido | ENARSI

5	EIGRPv6		Troubleshoot EIGRPv6 issues.
		EIGRPv6 Fundamentals	Explain the features and characteristics of EIGRPv6.
		Troubleshooting EIGRPv6 Neighbor Issues	Troubleshoot EIGRPv6 neighbor issues.
		Troubleshooting EIGRPv6 Routes	Troubleshoot EIGRPv6 route issues.
		Troubleshooting Named EIGRP	Troubleshoot named EIGRP.
6	OSPF		Explain how OSPF operates.
		OSPF Fundamentals	Explain the features and characteristics of the OSPF routing protocol.
		OSPF Configuration	Configure multiarea OSPFv2 in a routed network.
		OSPF in BMA Networks	Explain how OSPF works in BMA networks.
		OSPF Network Types	Compare OSPF network types.
		OSPF Failure Detection	Explain how the OSPF hello and dead timer intervals affect communications.





# Detalle del contenido | ENARSI

7	Advanced OSPF		Implement multiarea OSPF for IPv4 to enable internetwork communications.
		LSAs	Explain how multiarea OSPFv2 uses link-state advertisements.
		OSPF Stubby Areas	Explain the function of stubby areas in OSPF.
		OSPF Path Selection	Explain how OSPF selects the best path.



# Detalle del contenido | ENARSI

8	Troubleshooting OSPFv2		Troubleshoot connectivity issues in OSPFv2.
		Troubleshooting OSPFv2 Neighbor Adjacencies	Troubleshoot OSPFv2 neighbor adjacencies.
		Troubleshooting OSPFv2 Routes	Troubleshoot OSPFv2 routes.
		Troubleshooting OSPFv2 Issues	Troubleshoot miscellaneous OSPFv2 issues
9	OSPFv3		Implement multiarea OSPFv3.
		OSPFv3 Fundamentals	Compare the characteristics and operation of OSPFv2 to OSPFv3.
		OSPFv3 Configuration	Configure multiarea OSPFv3.
		OSPF LSA Flooding Scope	Compare the impact of OSPFv2 and OSPFv3 LSAs.
10	Troubleshooting OSPFv3		Troubleshoot issues with OSPFv3 implementation.
		Troubleshooting OSPFv3 for IPv6	Explain the use of the commands used to troubleshoot OSPFv3 issues.
		Troubleshooting OSPF v3 Address Families	Troubleshoot OSPFv3 address family issues.

11	BGP		Configure BGP.
		BGP Fundamentals	Describe basic BGP features.
		BGP Configuration	Configure BGP to establish neighbor sessions.
		BGP Session Types	Compare BGP session types.
		Multiprotocol BGP for IPv6	Configure multiprotocol BGP for IPv6.
12	Advanced BGP		Configure BGP with advanced features.
		Route Summarization	Configure summarization in BGP to improve performance.



# Detalle del contenido | ENARSI

13	BGP Path Selection		Explain the processes used by BGP for path selection.
		BGP Path Selection	Explain the processes used by BGP for path selection.
		BGP Attributes	Explain how BGP attributes affect path selection.
		BGP Equal Cost Multipath	Explain how equal cost multipathing provides load balancing for BGP.
14	Troubleshooting BGP		Troubleshoot BGP issues.
		Troubleshooting BGP Neighbor Adjacencies	Troubleshoot issues with BGP neighbor adjacencies.
		Troubleshooting BGP Routes	Troubleshoot BGP routes.
		Troubleshooting BGP Path Selection	Troubleshoot issues with BGP path selection.
		Troubleshooting BGP	Troubleshoot miscellaneous BGP issues.
15	Route Maps and Conditional Forwarding		Troubleshoot Route Maps and Conditional forwarding issues.
		Conditional Matching	Configure ACLs and prefix lists.



# Detalle del contenido | ENARSI

16	Route Redistribution		Configure route redistribution between routing protocols.
		Redistribution Overview	Explain route redistribution.
		Protocol Specific Redistribution Configuration	Configure route redistribution between routing protocols.
17	Troubleshooting Redistribution		Troubleshoot IPv4 and IPv6 route redistribution.
		Troubleshooting Advanced Redistribution	Troubleshoot advanced redistribution issues.
		Troubleshooting IPv4 and IPv6 Redistribution	Troubleshoot IPv4 and IPv6 route redistribution.
		Redistribution Trouble Tickets	Troubleshoot miscellaneous route redistribution issues.



# Detalle del contenido | ENARSI

18	VRF, MPLS, and MPLS Layer 3 VPNs		Explain the impact of VFR and MPLS on routing decisions.
		Implementing and Verifying VRF-Lite	Implement VRF-Lite.
		MPLS Operations	Explain how MPLS forwards packets.
		MPLS Layer 3 VPNs	Explain how MPLS Layer 3 VPNs provide peer-to-peer connectivity across a shared network.
19	DMVPN Tunnels		Implement DMVPN tunnels.
		GRE Tunnels	Explain the purpose and function of GRE tunnels.
		Next Hop Resolution Protocol (NHRP)	Describe the features and purpose of NHRP.
		DMVPN	Explain how DMVPN benefits network administrators.
		DMVPN Configuration and Operation	Implement DMVPN.



# Detalle del contenido | ENARSI

20	Securing DMVPN Tunnels		Configure IPsec DMVPN with Pre-Shared Authentication.
21	Troubleshooting ACLs and Prefix Lists		Troubleshoot ACLs and Prefix Lists.
		Troubleshooting IPv4 ACLs	Troubleshoot complex ACL implementations.
		Troubleshooting IPv6 ACLs	Troubleshoot IPv6 ACLs.
		Troubleshooting Prefix Lists	Troubleshoot Prefix Lists
		ACL and Prefix List Trouble Tickets	Troubleshoot miscellaneous ACL and prefix list issues.



# Detalle del contenido | ENARSI

22	Infrastructure Security		Troubleshoot security threats to a network.
		Cisco AAA Troubleshooting	Troubleshoot Cisco IOS AAA.
		Troubleshooting Unicast Reverse Path Forwarding (uRPF)	Troubleshoot Unicast Reverse Path Forwarding (uRPF)
		Troubleshooting Control Plane Policing (CoPP)	Troubleshooting Control Plane Policing (CoPP)
		IPv6 First-Hop Security	Describe IPv6 First-Hop Security features.

23	Device Management and Management Tools Troubleshooting		Troubleshoot Device Management and Management Tools.
		Device Management Troubleshooting	Troubleshoot Device Management Access
		Troubleshooting Tools	Troubleshoot Device Management Tools



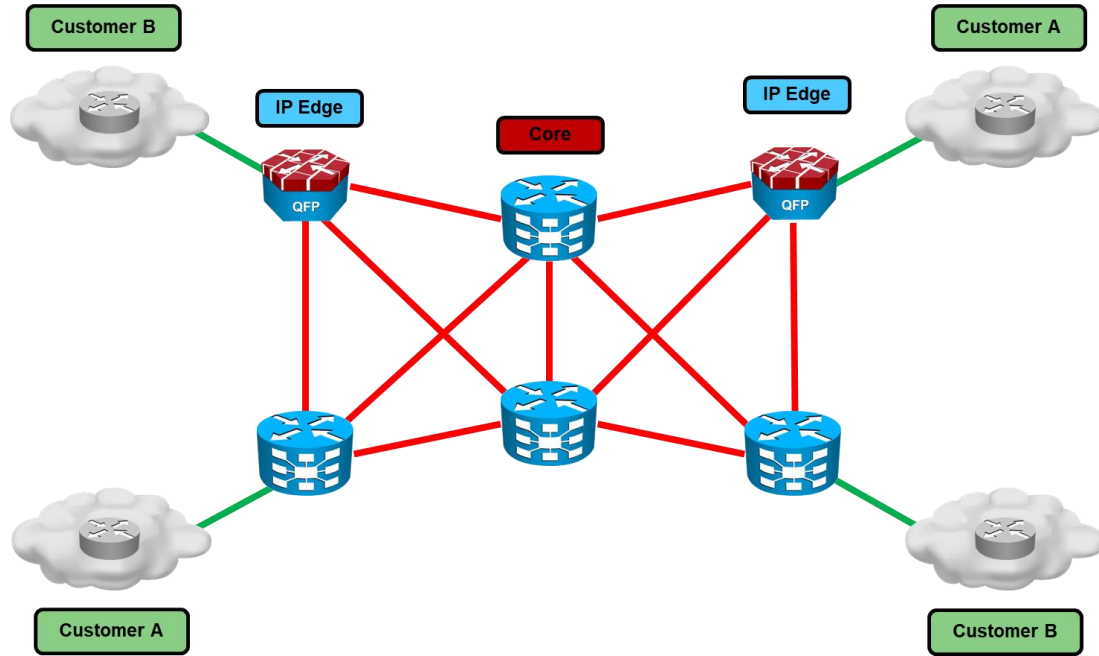


# Laboratorio virtual| ENARSI

- Contará con laboratorio virtual bajo el emulador EVE para el desarrollo de las prácticas llevadas a cabo durante el curso.
- CloudLamb les dará los accesos al laboratorio EVE el primer día de clases.
- Con nuestro contenido mejorado, usted aprenderá a instalar, configurar, operar y solucionar problemas a través de nuestro laboratorio virtual.







**CloudLamb**  
E-Learning

# ENARSI | Implementing Cisco Enterprise Advanced Routing and Services

